



# **No time to rest on one's laurels – A SMART sustainability assessment induced further optimisation on a banana farm in Costa Rica**

Silvia Marton\*, Lukas Baumgart, Leonhardt Jancso, Moritz Teriete, Christian Schader

Jan Landert ([jan.landert@fibl.org](mailto:jan.landert@fibl.org))

AC&SD 2016, 13 December 2016

# Introduction

- › **Holistic sustainability assessment of a banana farm in Costa Rica**
- › **Bananas and plantains: key agricultural export products in Costa Rica.**
- › **Potentially negative impacts:**
  - › **Pesticides: worker's health, aquatic organism etc.**
  - › **Social conditions: low wages, temporary hiring**

# Platanera Rio Sixaola S.A. banana farm

- › Located in the south-east of Costa Rica
- › 109 permanent employees
- › Banana varieties:
  - › Cavendish *conventional* 162,34 ha
  - › Dátil *organic* 7,54 ha
  - › Gros Michel *organic* (integrated in forest) 11,35



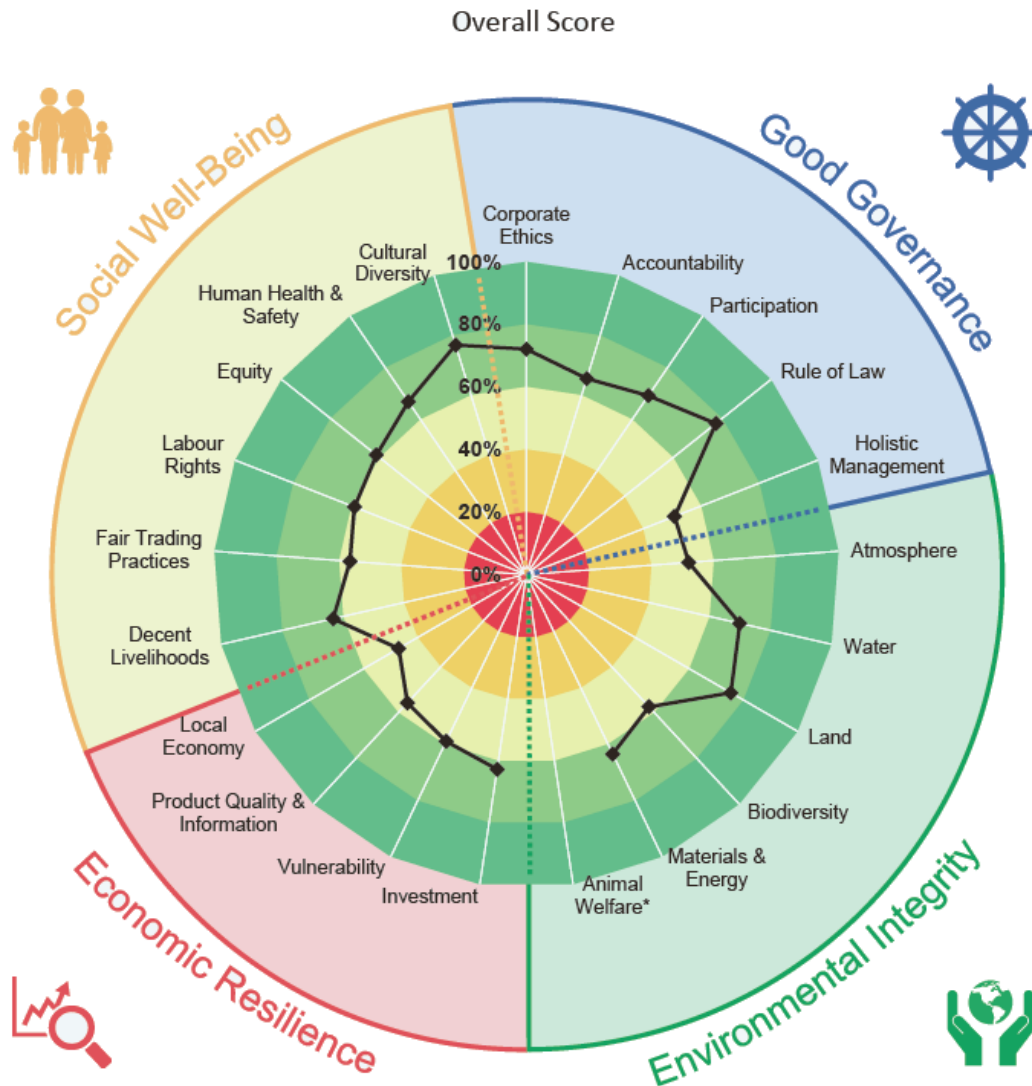
Accreditation for inclusion  
and non-discrimination



# SMART Assessment

- › **SMART, multi-criteria assessment based on 327 indicators**
- › **Based on "Sustainability Assessments of Food and Agriculture Systems" (SAFA) Guidelines**
- › **4 dimensions, 21 themes, 58 sub-themes**
- › **Rating based on a farm visit, interviews with the farm manager and employees; independent auditor**

# Results



**smart**  
sustainability monitoring  
and assessment routine



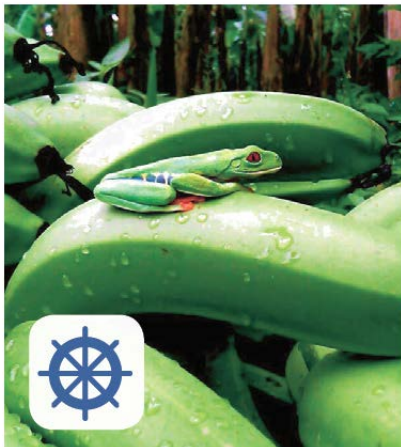
# Starting point for improvements



*Empowerment of workers' council*



*Wildlife photo contest of employees*



*Integrate true cost accounting*



*Residue and wildlife monitoring in rivers*



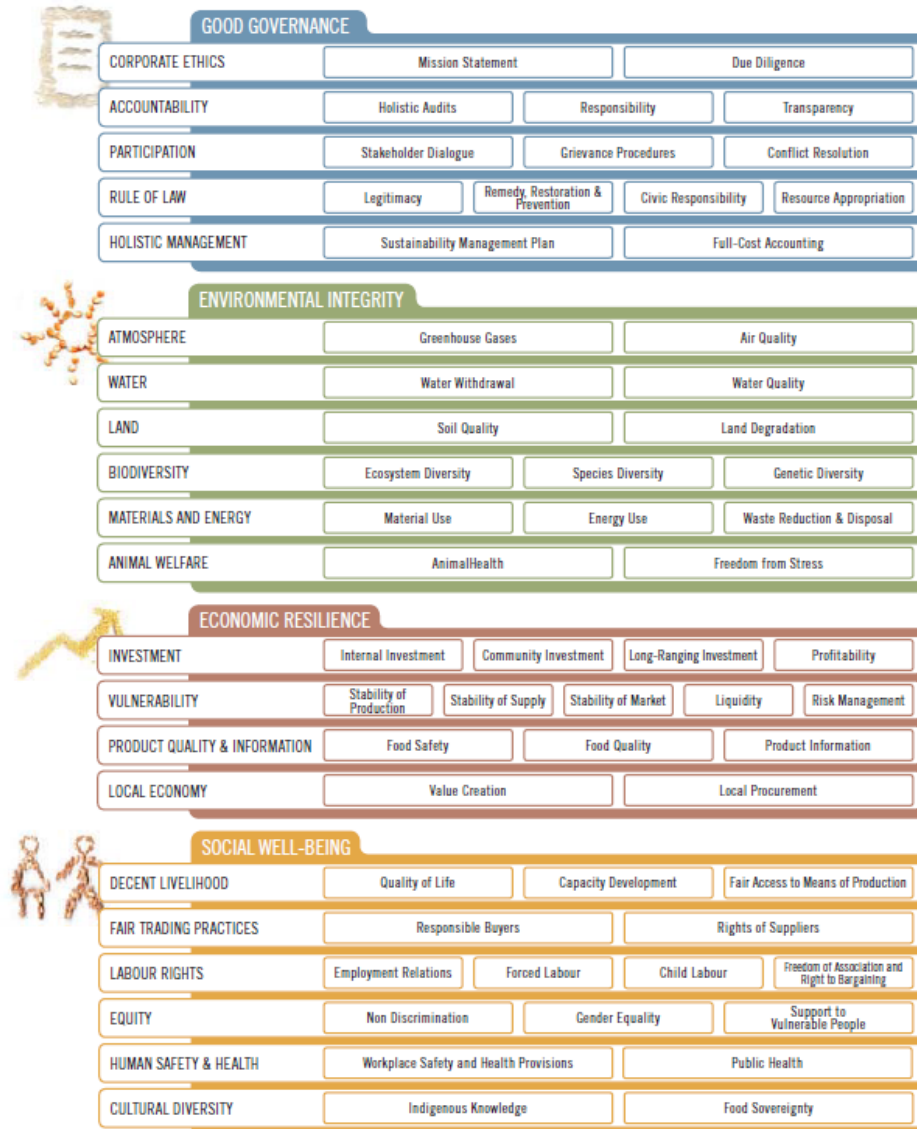
*Release of sloths into forests*

# Thank you for your attention!

# Additional Slides



# SAFA Guidelines

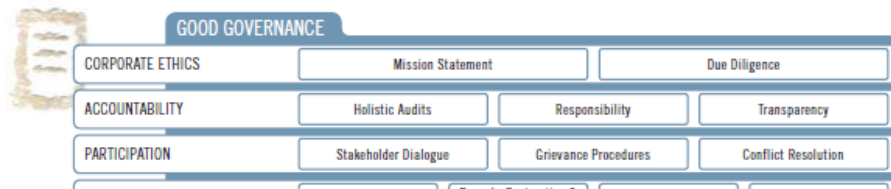


- 4 Dimensions
- 21 Themes
- **58 Sub-themes with sustainability objectives**



Food and Agriculture Organization  
of the United Nations

# SAFA Guidelines



# SAFA Guidelines



## ENVIRONMENTAL INTEGRITY



## SOCIAL WELL-BEING



# SAFA Guidelines



## ECONOMIC RESILIENCE



# SAFA Guidelines

